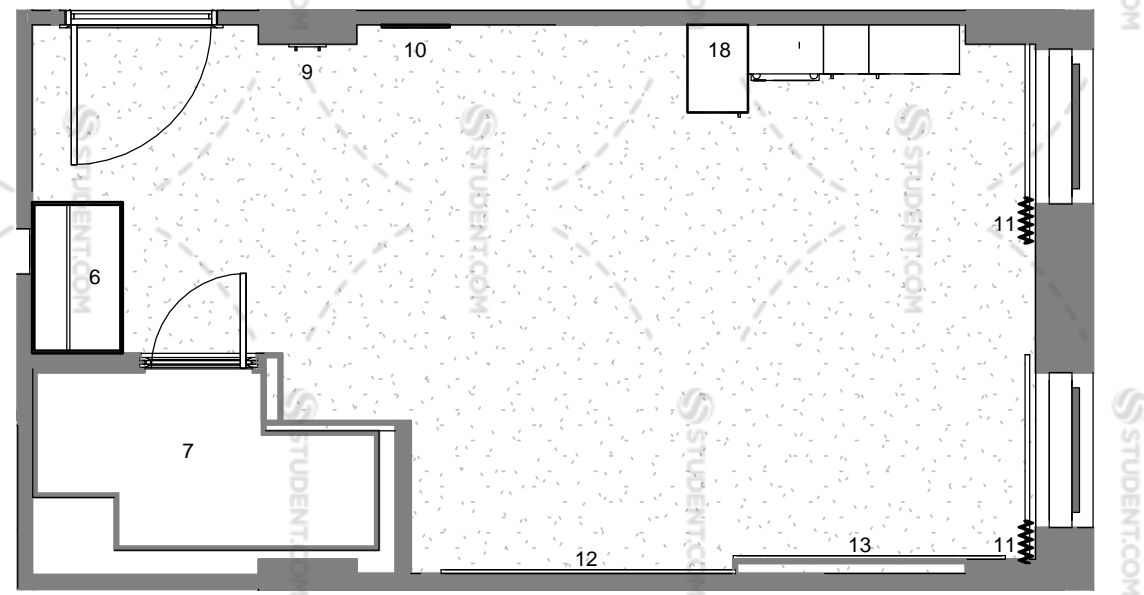
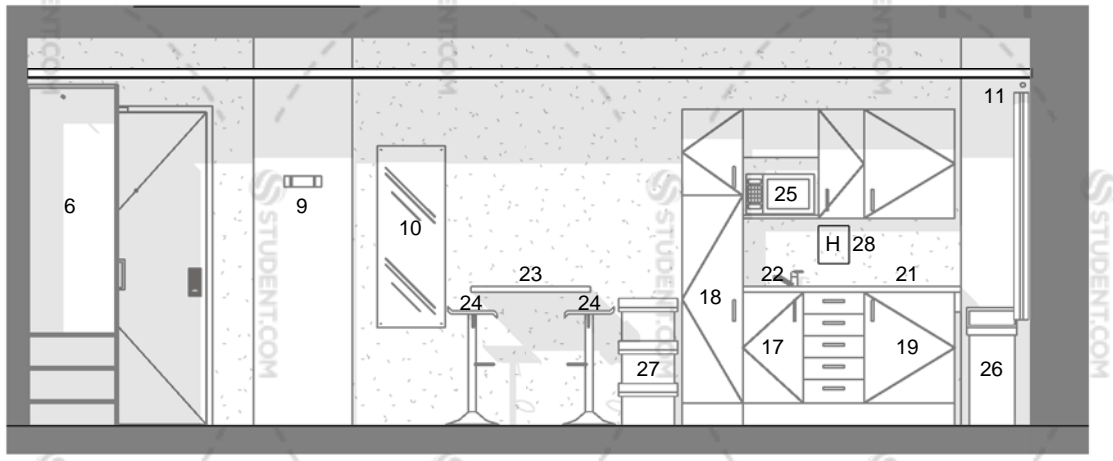


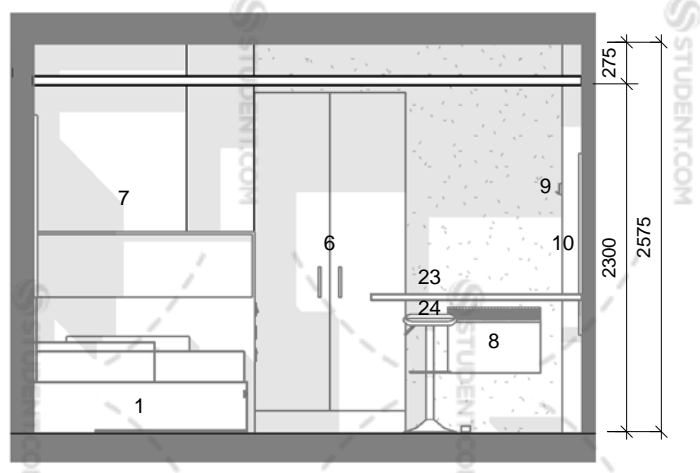
Premium Bedroom 3 Plan  
1 : 50



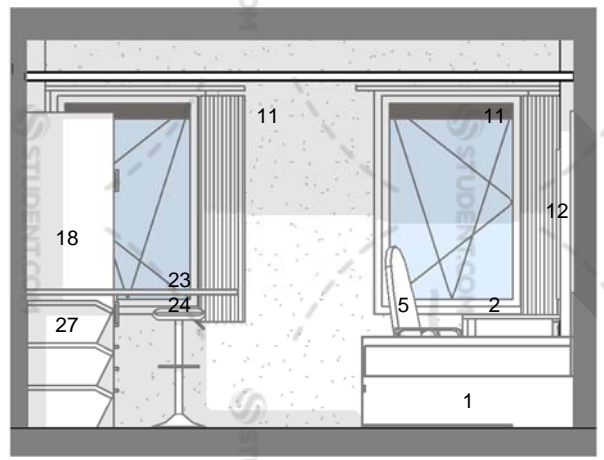
Premium Bedroom 3 Reflected Ceiling Plan  
1 : 50



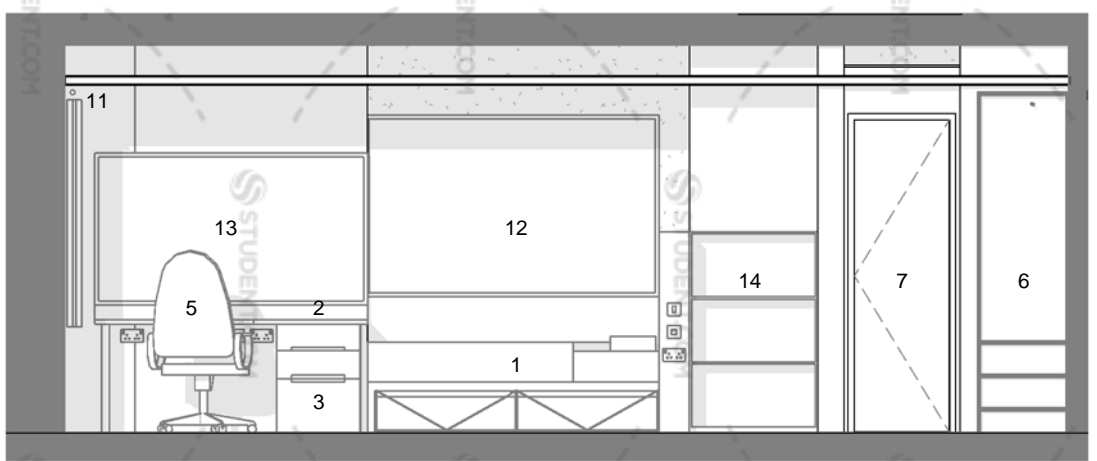
PB3 Elevation 2  
1 : 50



PB3 Elevation 1  
1 : 50



PB3 Elevation 3  
1 : 50



PB3 Elevation 4  
1 : 50

BEDROOMS RELATING TO PREMIUM  
BEDROOM TYPE 3

GROUND FLOOR  
FIRST FLOOR  
SECOND FLOOR  
THIRD FLOOR  
FOURTH FLOOR  
FIFTH FLOOR  
SIXTH FLOOR  
SEVENTH FLOOR  
EIGHTH FLOOR  
NINTH FLOOR  
ELEVENTH FLOOR

notes:

All dimensions are in millimetres unless stated otherwise. No dimensions to be scaled from drawings. All dimensions to be checked on site prior to manufacture.

Any discrepancies between drawings and site conditions are to be reported to the contract manager.

This drawing is to be read in conjunction with all relevant Structural Engineers and Mechanical & Electrical Engineers drawings and specification.

- KEY
- [BEDROOM AREA] Double Bed - 1950L x 1350W x 340H (4'6) with integrated headboard shelving (1330H x 200D x 1260W) and 2 under bed storage flaps
  - Desk (Scalloped) - 1800L x 650/450D with 2 No. grommets and a chrome leg. Clear height to underside of desk 720mm
  - 3 Drawer Pedestal Unit 550W x 600D x 720H
  - Shelving Unit - (custom to recess wall) 850W x 1330H x 250D
  - Desk chair - operator type - covered with Camira Extreme Plus Range
  - Wardrobe - 2250H x 1000W x 600D, 3 shelves
  - Shower Pod - Walkers S6 - finishes as per WMS0243/12 rev C document
  - Electric Panel Heater
  - Double Coat Hook - on edged square pattress
  - Mirror - 450W x 1200H - with bevelled edge and mirror capped screws
  - Curtain rail and curtains - rail to extend 150mm beyond window (minimum)
  - Pinboard - 1950W x 1200H above bed
  - Pinboard - 1800W x 1000H above desk
  - Book case - 550W x 1000H x 250D
  - Not used
  - [KITCHEN AREA] Wall Unit - 500 x 800mm
  - Base Unit under Sink - 600W x 860H (including 100mm plinth) x 600D
  - Tall Cupboard - 500W x 600D x 2100H + 100 Plinth
  - Worktop - 40mm thick roll edge, 900mm floor to top surface and 400mm splashback panel to match
  - Fridge with Icebox - 137lt fridge/ 85lt freezer - in Housing Unit (600W x 860H x 600D)
  - Extract Fan and Hood built into Housing Unit - 600x500mm high - extract at 30 ltr/sec
  - Hob - 2 ring electric stainless steel
  - Sink - stainless steel
  - Breakfast Bar (x1) - to match worktop
  - Bar Stools - (x2)
  - Microwave Oven - Combination Daewoo 800w 20lt
  - General Waste Bin (x1) - 50lt
  - Recycling Bin (x1) - 30lt
  - Fire Blanket (x1) - 1000mm x 1000mm

dwg status:

**PRELIMINARY**

Rev	Description	Date	By	Chk
D	Generally revised in accordance with Client comments	22/05/14	IR	GE
C	Desk handed and bed updated to include shelf	16/05/14	IR	GE
B	Generally revised in accordance with Client comments	09/05/14	IR	GE
A	First Issue	16/04/14	IR	GE



dwg title:	Premium Bedroom Type 3		
job title:	Ablett House for Knightsbridge Student Housing Ltd.		
scale:	1 : 50 @ A3	drawn:	IR
date:	16/04/14	job no:	1425
dwg no:	72_006	rev:	D